

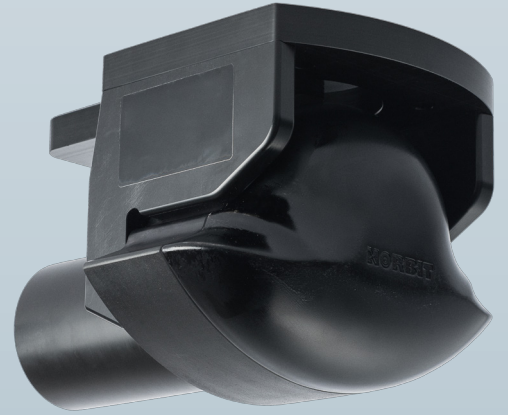
## NORBIT - iWBMS<sub>e</sub> ENTRY-LEVEL TURNKEY MULTIBEAM SONAR SYSTEM

For Rapid Bathymetric Surveying in Protected Waters

Introducing the all-new entry-level high-resolution curved-array bathymetric mapping system from NORBIT.

This all-in-one tightly integrated broadband multibeam turnkey solution offers high resolution bathymetry over a wide swath. The high-end sonar with globally leading GNSS/Inertial Navigation System (Applanix SurfMaster) embedded into the unit ensures fast and reliable mobilization and highest quality sounding for most conditions.

The iWBMS<sub>e</sub> is an ideal choice for protected waterway bathymetric surveys; it may be mobilized on any vessel of opportunity and offers streamlined operability and good performance to match budget and project requirements. Additionally, the kit provides industry's highest resolution multibeam side-scan and snippets for wide swath shallow water applications. The WBMS sonars are based on a state of the art analog and digital platform featuring powerful signal processing capabilities, offering roll stabilized bathymetry and several imagery and backscatter output. With broad R&D expertise NORBIT has developed, from the ground-up, exciting new technology that allows existing and new applications to benefit from the advantages offered by a compact wideband curved-array multibeam sonar.



### Features

- ✓ Multibeam Sonar Tightly Integrated with State of the Art GNSS-aided Inertial Navigation System (Applanix SurfMaster)
- ✓ 80kHz Bandwidth
- ✓ Roll-stabilisation, Side-scan, Water Column, Backscatter, Snippets
- ✓ Simple Ethernet Interface
- ✓ Integrated Sound Velocity Probe
- ✓ Hydrodynamic Fairing
- ✓ Mounting Bracket Included
- ✓ FM & CW Processing
- ✓ Flexible Power Option
- ✓ Exceeds IHO *Special Order*, CHS *Exclusive Order* & USACE *New Work*

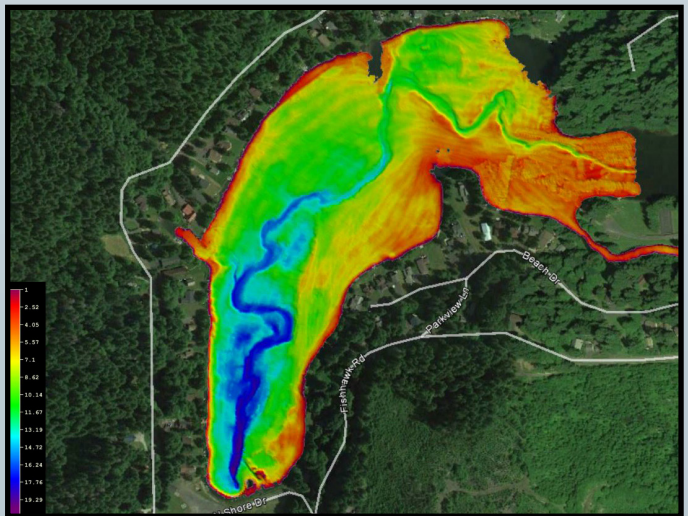
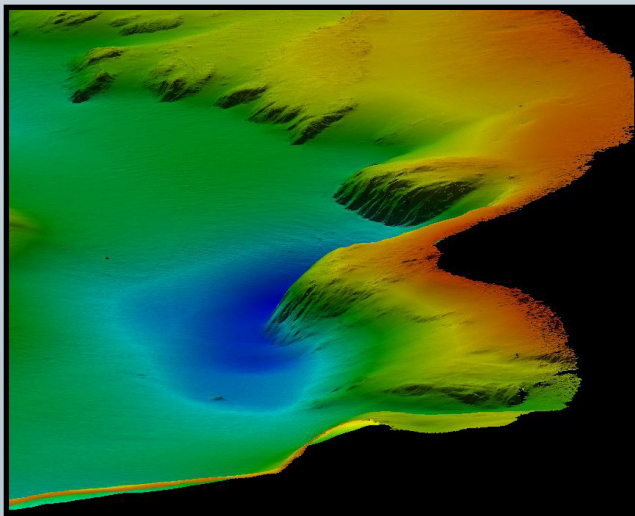
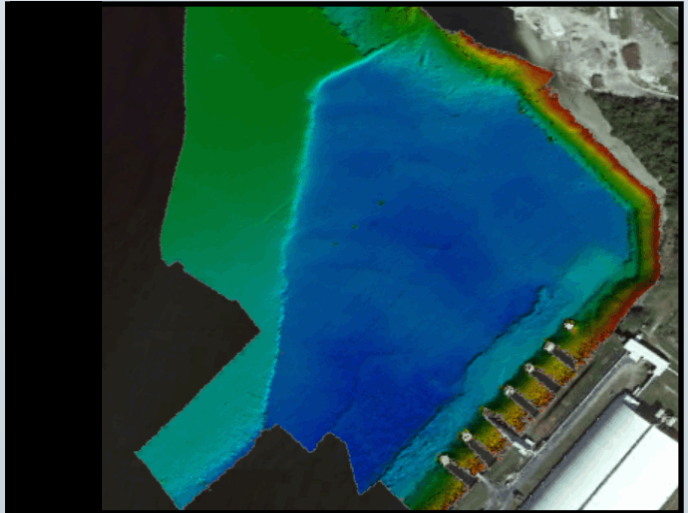
### Applications

- ✓ Shallow Water Bathymetry
- ✓ Pipeline Surveys
- ✓ Pond, River and Estuary Surveys
- ✓ Harbor and Lake Surveys
- ✓ USV & UUV Ready
- ✓ High Resolution Multibeam-Sidescan

### Options

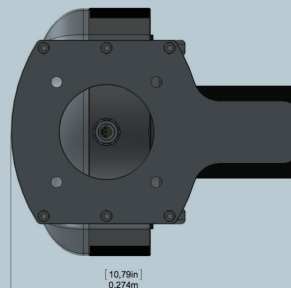
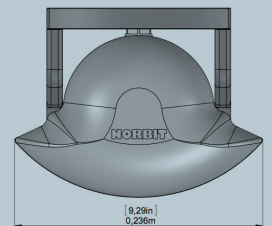
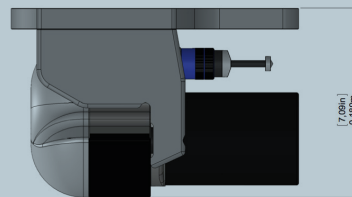
- ✓ Senior Hydrographer for Support and Training
- ✓ Sound Velocity Profiler
- ✓ Recommended option: RTK or PPK software (also avail. as a service)
- ✓ 200kHz Version
- ✓ Turnkey Survey Solutions
- ✓ Hull and Pole Mount Options
- ✓ Narrow Beam Option
- ✓ Field Upgradeable IMU
- ✓ Acquisition, Navigation and Post Processing Software
- ✓ Can Be Delivered with e.g. HYPACK, QINSy, EIVA, CARIS and others

# NORBIT iWBMSe Wideband Multibeam Sonar For Turnkey High Resolution Bathymetry



## TECHNICAL SPECIFICATION

SWATH COVERAGE	7-210° FLEXILE SECTOR (SHALLOW WATER IHO SPECIAL ORDER >155°)
RANGE RESOLUTION	<10mm (ACOUSTIC w. 80kHz BANDWIDTH)
NUMBER OF BEAMS	256-512 EA & ED
OPERATING FREQUENCY	NOMINAL FREQUENCY 400kHz (FREQUENCY AGILITY 200-700kHz)
DEPTH RANGE	0.2-275m (160m TYPICAL @ 400kHz)
PING RATE	UP TO 60Hz, ADAPTIVE
RESOLUTION (ACROSS X ALONG)	STANDARD: 0.9° X 1.9° @400kHz AND 0.5° X 1.0° @700kHz. NARROW OPTION: 0.9° X 0.9° @400kHz AND 0.5° X 0.5° @700kHz
POSITION	HOR: ±(8mm +1ppm X DISTANCE FROM RTK STATION) VER: ±(15mm +1ppm X DISTANCE FROM RTK STATION) (ASSUMES 1m GNSS SEPARATION)
HEADING ACCURACY	0.08° (RTK) WITH 2m ANTENNA SEPARATION
PITCH/ROLL ACCURACY	0.03° INDEPENDENT OF ANTENNA SEPARATION
HEAVE ACCURACY	5cm or 5% (2cm RTK)
WEIGHT	6.5kg (AIR), 2.4kg (WATER) WITH BRACKET (LESS THAN 19KG WHEN PACKED IN PELICAN CASE)
INTERFACE	ETHERNET
CABLE LENGTH	STD 8m, OPTIONS: 25m, PIGTAIL, CUSTOM UP TO 50m
POWER CONSUMPTION	60W (75W MAX) (10-28VDC, 110-240VAC)
OPERATING TEMP.	-4°C TO +40°C (TOPSIDE -20°C TO +55°C)
STORAGE TEMP	-20°C to +60°C
ENVIRONMENTAL	TOPSIDE: IP67: DUST TIGHT, PROTECTED AGAINST THE EFFECT OF IMMERSION UP TO 1m/WET-END: 100m



Part #12006

